



ControlSpace™ ESP-88 AES3 output card

Installation should only be performed by trained service personnel.

1. Turn off and unplug the ESP-88, and detach the top cover by removing the 8 screws.
2. Remove a bracket from an empty slot from slots 5-8 by removing the 2 screws (save these screws). The AES3 output card will replace this bracket.
3. Position the card in the chassis. Be sure to align the card's LEDs with the holes in the front of the chassis, and make sure the connector on the side of the card is aligned with the connector on the motherboard. Use the black guide on the bottom of the case to direct the card using the grooves. See *Figure 1*.
4. When the connector on the card is aligned above the connector on the motherboard, press gently to mate the connectors. See *Figure 2*.
5. Screw the card into place.
6. Reattach the top cover and fasten the 8 screws. Plug in the power supply and turn on the ESP-88.

Figure 1

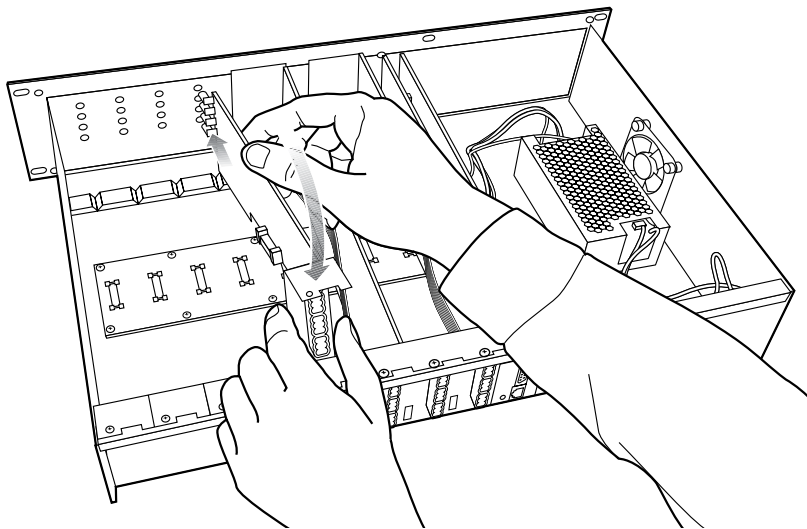
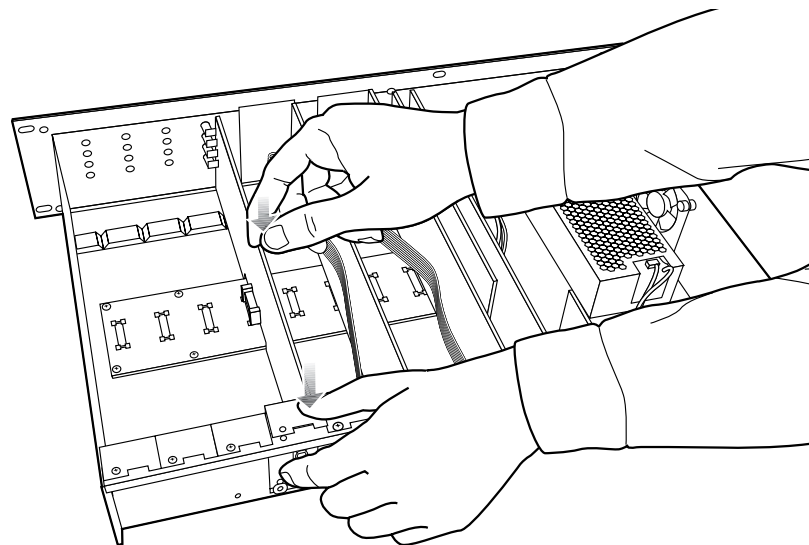
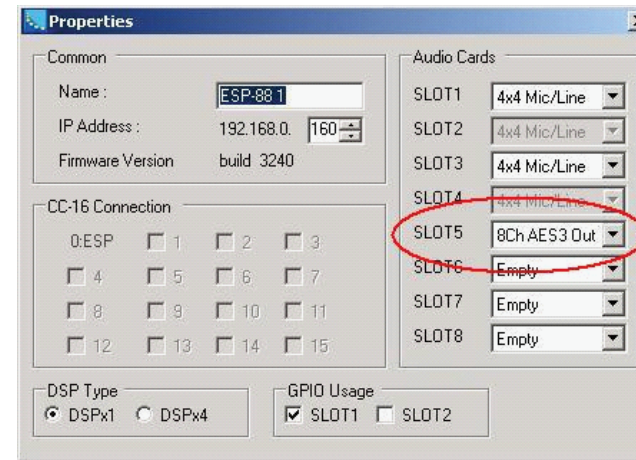


Figure 2



7. Use the ControlSpace™ designer software to verify the card was inserted correctly:
 - a) Press scan and confirm that the software detects the card.
 - b) If the card was installed correctly, right-clicking the ESP-88 and displaying its properties will show **8Ch AES3 Out** in the correct slot in the ESP-88. See Figure 3.
8. If an error message appears, or the software does not properly detect the AES3 Output card, repeat the installation instructions. Be sure that the card is completely pushed into the connector, and that the card is properly aligned in the chassis.

Figure 3



For installation instructions in other languages, please visit pro.bose.com.